

JOESandbox Cloud BASIC



ID: 382564

Sample Name: gg_1.gif.dll

Cookbook: default.jbs

Time: 10:05:22

Date: 06/04/2021

Version: 31.0.0 Emerald

Table of Contents

Table of Contents	2
Analysis Report gg_1.gif.dll	4
Overview	4
General Information	4
Detection	4
Signatures	4
Classification	4
Startup	4
Malware Configuration	4
Threatname: Ursnif	4
Yara Overview	4
Memory Dumps	5
Unpacked PEs	5
Sigma Overview	5
Signature Overview	5
AV Detection:	5
Key, Mouse, Clipboard, Microphone and Screen Capturing:	5
E-Banking Fraud:	5
Hooking and other Techniques for Hiding and Protection:	6
Stealing of Sensitive Information:	6
Remote Access Functionality:	6
Mitre Att&ck Matrix	6
Behavior Graph	6
Screenshots	7
Thumbnails	7
Antivirus, Machine Learning and Genetic Malware Detection	8
Initial Sample	8
Dropped Files	8
Unpacked PE Files	8
Domains	8
URLs	8
Domains and IPs	9
Contacted Domains	9
Contacted IPs	9
General Information	9
Simulations	9
Behavior and APIs	10
Joe Sandbox View / Context	10
IPs	10
Domains	10
ASN	10
JA3 Fingerprints	10
Dropped Files	10
Created / dropped Files	10
Static File Info	10
General	10
File Icon	11
Static PE Info	11
General	11
Entrypoint Preview	11
Data Directories	12
Sections	12
Imports	13
Exports	13
Network Behavior	13
Code Manipulations	13

Statistics	13
Behavior	13
System Behavior	13
Analysis Process: loaddll32.exe PID: 6836 Parent PID: 2916	14
General	14
File Activities	14
Analysis Process: cmd.exe PID: 6864 Parent PID: 6836	14
General	14
File Activities	14
Analysis Process: rundll32.exe PID: 6908 Parent PID: 6836	14
General	14
File Activities	15
Analysis Process: rundll32.exe PID: 6920 Parent PID: 6864	15
General	15
Disassembly	15
Code Analysis	15

Analysis Report gg_1.gif.dll

Overview

General Information

Sample Name:	gg_1.gif.dll
Analysis ID:	382564
MD5:	53f7e96f48283df...
SHA1:	bd119af6c52876f..
SHA256:	4b8946f9fee32db..
Tags:	dll GG Gozi IFSB Ursnif
Infos:	
Most interesting Screenshot:	

Detection

MALICIOUS

SUSPICIOUS

CLEAN

UNKNOWN

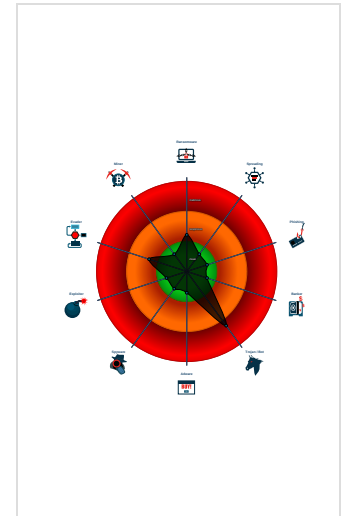
Ursnif

Score:	68
Range:	0 - 100
Whitelisted:	false
Confidence:	100%

Signatures

- Found malware configuration
- Multi AV Scanner detection for subm...
- Yara detected Ursnif
- Machine Learning detection for samp...
- Contains functionality to read the PEB
- Creates a process in suspended mo...
- Detected potential crypto function
- PE file contains sections with non-s...
- Program does not show much activi...
- Uses 32bit PE files
- Uses code obfuscation techniques (...)

Classification



Startup

- System is w10x64
- loaddll32.exe (PID: 6836 cmdline: loaddll32.exe 'C:\Users\user\Desktop\gg_1.gif.dll' MD5: 542795ADF7CC08EFCF675D65310596E8)
 - cmd.exe (PID: 6864 cmdline: cmd.exe /C rundll32.exe 'C:\Users\user\Desktop\gg_1.gif.dll',#1 MD5: F3BDBE3BB6F734E357235F4D5898582D)
 - rundll32.exe (PID: 6920 cmdline: rundll32.exe 'C:\Users\user\Desktop\gg_1.gif.dll',#1 MD5: D7CA562B0DB4F4DD0F03A89A1FDAD63D)
 - rundll32.exe (PID: 6908 cmdline: rundll32.exe C:\Users\user\Desktop\gg_1.gif.dll,DllServer MD5: D7CA562B0DB4F4DD0F03A89A1FDAD63D)
- cleanup

Malware Configuration

Threatname: Ursnif

```
[
  [
    {
      "RSA Public Key":
      "bUd4GfCfHo0e+ZYUbkHaTKXnZ1xEyxvy7Ha6j1WAZbQ7YvMdkqTfD1vHD2y2CnFTRrLK1w5iQroYI0mUpJ4xNknLY+BnJf4xpeJRxxK0RRNeRbH5unSB2vXqvvLTgz6vNZY+9zeztuP2jXKpIm0/s+YxWnsT7eWUtQtD38NlsAptJdp+3rBxjzAHNKQj7wMA"
    },
    {
      "c2_domain": [
        "bing.com",
        "update4.microsoft.com",
        "under17.com",
        "urs-world.com"
      ],
      "botnet": "5566",
      "server": "12",
      "serpent_key": "103010293JUVDWG",
      "sleep_time": "10",
      "SetWaitableTimer_value": "0",
      "DGA_count": "10"
    }
  ]
]
```

Yara Overview

Memory Dumps

Source	Rule	Description	Author	Strings
00000004.00000002.387313333.0000000004BA0000.0000004.00000001.sdmp	JoeSecurity_Ursnif_1	Yara detected Ursnif	Joe Security	
00000005.00000002.389073217.0000000004B40000.0000004.00000001.sdmp	JoeSecurity_Ursnif_1	Yara detected Ursnif	Joe Security	
00000001.00000002.699200830.0000000000EC0000.0000004.00000001.sdmp	JoeSecurity_Ursnif_1	Yara detected Ursnif	Joe Security	

Unpacked PEs

Source	Rule	Description	Author	Strings
5.2.rundll32.exe.4b40000.2.raw.unpack	JoeSecurity_Ursnif_1	Yara detected Ursnif	Joe Security	
4.2.rundll32.exe.4ba0000.2.raw.unpack	JoeSecurity_Ursnif_1	Yara detected Ursnif	Joe Security	
1.2.loaddll32.exe.ec0000.1.raw.unpack	JoeSecurity_Ursnif_1	Yara detected Ursnif	Joe Security	


Sigma Overview

No Sigma rule has matched

Signature Overview



- AV Detection
- Compliance
- Key, Mouse, Clipboard, Microphone and Screen Capturing
- E-Banking Fraud
- System Summary
- Data Obfuscation
- Hooking and other Techniques for Hiding and Protection
- Malware Analysis System Evasion
- Anti Debugging
- HIPS / PFW / Operating System Protection Evasion
- Stealing of Sensitive Information
- Remote Access Functionality

 Click to jump to signature section

AV Detection:



Found malware configuration

Multi AV Scanner detection for submitted file

Machine Learning detection for sample

Key, Mouse, Clipboard, Microphone and Screen Capturing:



Yara detected Ursnif

E-Banking Fraud:



Yara detected Ursnif

Hooking and other Techniques for Hiding and Protection:



Yara detected Ursnif

Stealing of Sensitive Information:



Yara detected Ursnif

Remote Access Functionality:

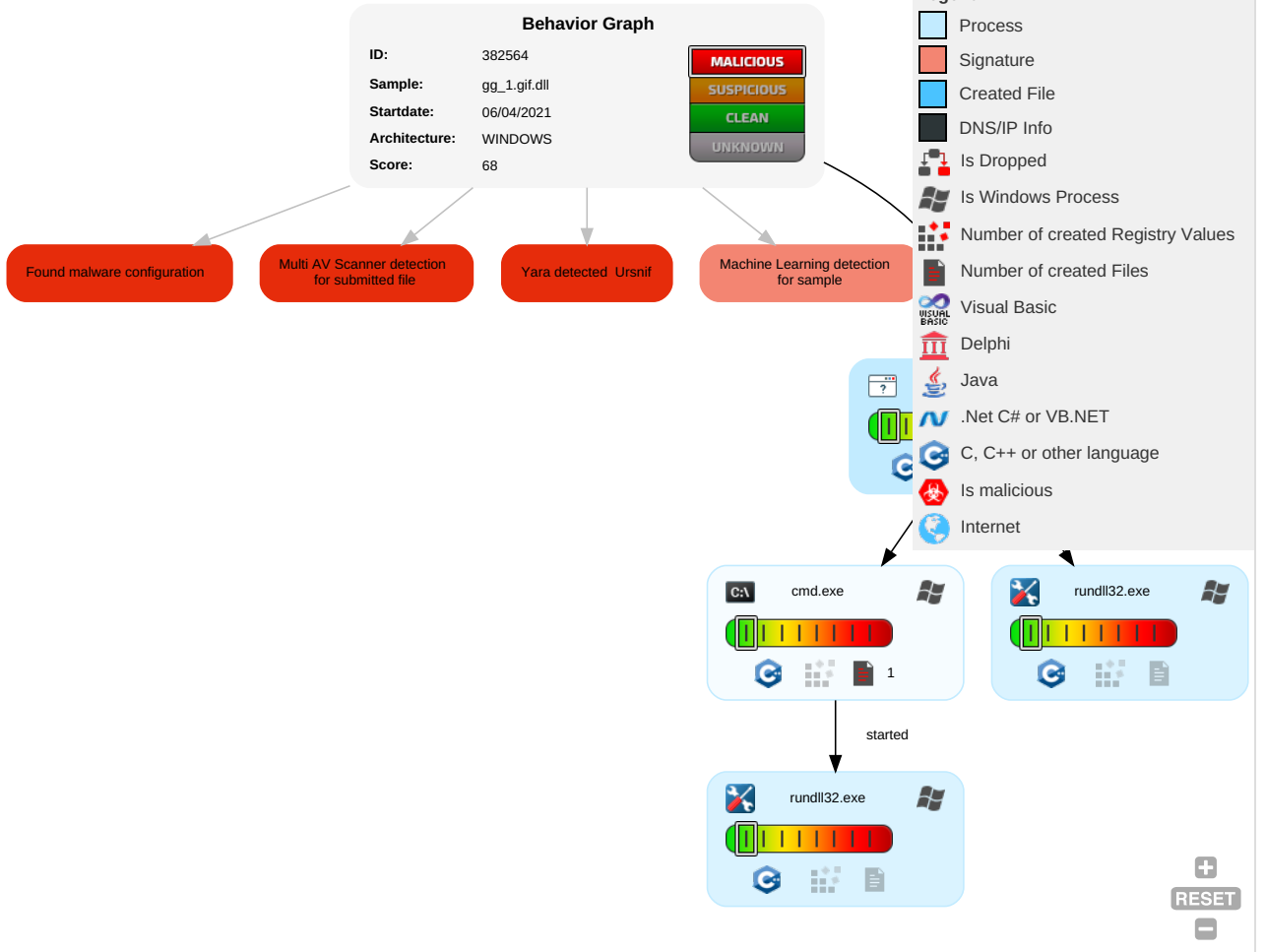


Yara detected Ursnif

Mitre Att&ck Matrix

Initial Access	Execution	Persistence	Privilege Escalation	Defense Evasion	Credential Access	Discovery	Lateral Movement	Collection	Exfiltration	Command and Control	Network Effects
Valid Accounts	Windows Management Instrumentation	Path Interception	Process Injection 1 1	Rundll32 1	OS Credential Dumping	Virtualization/Sandbox Evasion 1	Remote Services	Archive Collected Data 1	Exfiltration Over Other Network Medium	Encrypted Channel 1	Eavesdrop on Insecure Network Communication
Default Accounts	Scheduled Task/Job	Boot or Logon Initialization Scripts	Boot or Logon Initialization Scripts	Virtualization/Sandbox Evasion 1	LSASS Memory	System Information Discovery 1	Remote Desktop Protocol	Data from Removable Media	Exfiltration Over Bluetooth	Junk Data	Exploit SS7 to Redirect Phone Calls/SMS
Domain Accounts	At (Linux)	Logon Script (Windows)	Logon Script (Windows)	Process Injection 1 1	Security Account Manager	Query Registry	SMB/Windows Admin Shares	Data from Network Shared Drive	Automated Exfiltration	Steganography	Exploit SS7 to Track Device Location
Local Accounts	At (Windows)	Logon Script (Mac)	Logon Script (Mac)	Obfuscated Files or Information 1	NTDS	System Network Configuration Discovery	Distributed Component Object Model	Input Capture	Scheduled Transfer	Protocol Impersonation	SIM Card Swap

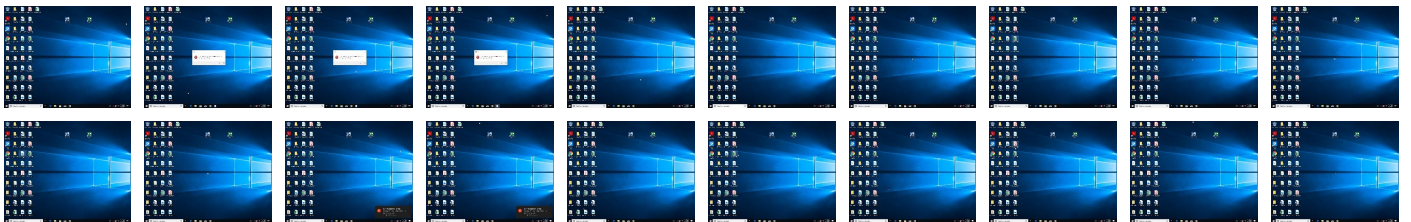
Behavior Graph



Screenshots

Thumbnails

This section contains all screenshots as thumbnails, including those not shown in the slideshow.





Antivirus, Machine Learning and Genetic Malware Detection

Initial Sample

Source	Detection	Scanner	Label	Link
gg_1.gif.dll	42%	ReversingLabs	Win32.Trojan.Wacatac	
gg_1.gif.dll	100%	Joe Sandbox ML		

Dropped Files

No Antivirus matches

Unpacked PE Files

No Antivirus matches

Domains

No Antivirus matches

URLs

No Antivirus matches

Domains and IPs

Contacted Domains

No contacted domains info

Contacted IPs

No contacted IP infos

General Information

Joe Sandbox Version:	31.0.0 Emerald
Analysis ID:	382564
Start date:	06.04.2021
Start time:	10:05:22
Joe Sandbox Product:	CloudBasic
Overall analysis duration:	0h 7m 24s
Hypervisor based Inspection enabled:	false
Report type:	light
Sample file name:	gg_1.gif.dll
Cookbook file name:	default.jbs
Analysis system description:	Windows 10 64 bit v1803 with Office Professional Plus 2016, Chrome 85, IE 11, Adobe Reader DC 19, Java 8 Update 211
Run name:	Run with higher sleep bypass
Number of analysed new started processes analysed:	25
Number of new started drivers analysed:	0
Number of existing processes analysed:	0
Number of existing drivers analysed:	0
Number of injected processes analysed:	0
Technologies:	<ul style="list-style-type: none">• HCA enabled• EGA enabled• HDC enabled• AMSI enabled
Analysis Mode:	default
Analysis stop reason:	Timeout
Detection:	MAL
Classification:	mal68.troj.winDLL@7/0@0/0
EGA Information:	Failed
HDC Information:	<ul style="list-style-type: none">• Successful, ratio: 87% (good quality ratio 76.4%)• Quality average: 65.8%• Quality standard deviation: 33.3%
HCA Information:	<ul style="list-style-type: none">• Successful, ratio: 100%• Number of executed functions: 0• Number of non-executed functions: 0
Cookbook Comments:	<ul style="list-style-type: none">• Adjust boot time• Enable AMSI• Sleeps bigger than 120000ms are automatically reduced to 1000ms• Found application associated with file extension: .dll
Warnings:	Show All <ul style="list-style-type: none">• Exclude process from analysis (whitelisted): MpCmdRun.exe, BackgroundTransferHost.exe, WMIADAP.exe, backgroundTaskHost.exe, conhost.exe, svchost.exe, wuapihost.exe• VT rate limit hit for: /opt/package/joesandbox/database/analysis/382564/sample/gg_1.gif.dll

Simulations

Behavior and APIs

Time	Type	Description
10:07:06	API Interceptor	1x Sleep call for process: loadll32.exe modified

Joe Sandbox View / Context

IPs

No context

Domains

No context

ASN

No context

JA3 Fingerprints

No context

Dropped Files

No context

Created / dropped Files

No created / dropped files found

Static File Info

General	
File type:	PE32 executable (DLL) (GUI) Intel 80386, for MS Windows
Entropy (8bit):	6.127836134489194
TrID:	<ul style="list-style-type: none">Win32 Dynamic Link Library (generic) (1002004/3) 99.60%Generic Win/DOS Executable (2004/3) 0.20%DOS Executable Generic (2002/1) 0.20%Autodesk FLIC Image File (extensions: flc, fli, cel) (7/3) 0.00%
File name:	gg_1.gif.dll
File size:	118163
MD5:	53f7e96f48283df339164afadd174638
SHA1:	bd119af6c52876fb5d23398326850d87fe159735
SHA256:	4b8946f9fee32db6b42f7c0fdb70ca9ba7980c5932d3f959227cdfbef15e8c34
SHA512:	6fb9579bcafa72d3eaac9238aaa54b5e87fa1787b8d2b0ca1735e9c8dc362e318a6c100d72fcb35ca32a472250b598350730f80f54327a7d975d9271fcb3d5
SSDEEP:	1536:tm15JsYm3GCVS7ZicTJzRVd620ZmB9RMli0m sUdqZEACW4jySTLW:eLsacThRVd6pmBPM07vYZEA4/W
File Content Preview:	MZ.....@.....!..L!Th is program cannot be run in DOS mode...\$....._W...6e. .6e..6e..)v..6e...w..6e.Rich.6e.....PE..L....f'..... !!.....ko.....

File Icon



Icon Hash:

74f0e4ecccdce0e4

Static PE Info

General

Entrypoint:	0x10006f6b
Entrypoint Section:	.code
Digitally signed:	false
Imagebase:	0x10000000
Subsystem:	windows gui
Image File Characteristics:	32BIT_MACHINE, EXECUTABLE_IMAGE, DLL
DLL Characteristics:	
Time Stamp:	0x6066E9D0 [Fri Apr 2 09:54:24 2021 UTC]
TLS Callbacks:	
CLR (.Net) Version:	
OS Version Major:	4
OS Version Minor:	0
File Version Major:	4
File Version Minor:	0
Subsystem Version Major:	4
Subsystem Version Minor:	0
Import Hash:	3f728412058b62c418b1091768b74d7b

Entrypoint Preview

Instruction

```
push ebx
push esi
and dword ptr [esp], 00000000h
or dword ptr [esp], ebp
mov ebp, esp
add esp, FFFFFFFF8h
push esp
mov dword ptr [esp], FFFF0000h
call 00007F12D0900541h
push eax
add dword ptr [esp], 00000247h
sub dword ptr [esp], eax
push esi
mov dword ptr [esp], 00001567h
call 00007F12D08FF4B7h
push eax
or dword ptr [esp], eax
pop eax
jne 00007F12D09047BBh
pushad
push 00000000h
mov dword ptr [esp], esi
xor esi, esi
xor esi, dword ptr [ebx+0041C627h]
mov eax, esi
pop esi
push ebx
add dword ptr [esp], 40h
sub dword ptr [esp], ebx
push ebp
add dword ptr [esp], 00001000h
sub dword ptr [esp], ebp
mov dword ptr [ebp-04h], 00000000h
push dword ptr [ebp-04h]
xor dword ptr [esp], eax
```

Instruction
push 00000000h
call dword ptr [ebx+0041F05Ch]
mov dword ptr [ebp-04h], ecx
xor ecx, dword ptr [ebp-04h]
or ecx, eax
and edi, 00000000h
xor edi, ecx
mov ecx, dword ptr [ebp-04h]
push edi
pop dword ptr [ebp-04h]
push dword ptr [ebp-04h]
pop dword ptr [ebx+0041CAEDh]
cmp ebx, 00000000h
jbe 00007F12D09047ACh
push 00000000h
add dword ptr [esp], edx
push dword ptr [ebx+0041C166h]
pop edx
add edx, ebx
mov dword ptr [ebx+0041C166h], edx
pop edx
push 00000000h
add dword ptr [esp], edx
push dword ptr [ebx+0041CECAh]
pop edx
add edx, ebx
mov dword ptr [ebx+0041CECAh], edx
pop edx
push ebp
and ebp, 00000000h
or ebp, dword ptr [ebx+0041C166h]

Data Directories

Name	Virtual Address	Virtual Size	Is in Section
IMAGE_DIRECTORY_ENTRY_EXPORT	0x1a000	0x64	.data
IMAGE_DIRECTORY_ENTRY_IMPORT	0x1f0fc	0x118	.data
IMAGE_DIRECTORY_ENTRY_RESOURCE	0x0	0x0	
IMAGE_DIRECTORY_ENTRY_EXCEPTION	0x0	0x0	
IMAGE_DIRECTORY_ENTRY_SECURITY	0x0	0x0	
IMAGE_DIRECTORY_ENTRY_BASERELOC	0x0	0x0	
IMAGE_DIRECTORY_ENTRY_DEBUG	0x0	0x0	
IMAGE_DIRECTORY_ENTRY_COPYRIGHT	0x0	0x0	
IMAGE_DIRECTORY_ENTRY_GLOBALPTR	0x0	0x0	
IMAGE_DIRECTORY_ENTRY_TLS	0x0	0x0	
IMAGE_DIRECTORY_ENTRY_LOAD_CONFIG	0x0	0x0	
IMAGE_DIRECTORY_ENTRY_BOUND_IMPORT	0x0	0x0	
IMAGE_DIRECTORY_ENTRY_IAT	0x1f000	0xfc	.data
IMAGE_DIRECTORY_ENTRY_DELAY_IMPORT	0x0	0x0	
IMAGE_DIRECTORY_ENTRY_COM_DESCRIPTOR	0x0	0x0	
IMAGE_DIRECTORY_ENTRY_RESERVED	0x0	0x0	

Sections

Name	Virtual Address	Virtual Size	Raw Size	Xored PE	ZLIB Complexity	File Type	Entropy	Characteristics
.code	0x1000	0x185f2	0x18600	False	0.670042067308	data	6.53345039933	IMAGE_SCN_MEM_EXECUTE, IMAGE_SCN_CNT_CODE, IMAGE_SCN_MEM_READ
.data	0x1a000	0x64	0x200	False	0.16796875	data	1.0662581269	IMAGE_SCN_CNT_INITIALIZED_DATA, IMAGE_SCN_MEM_READ
.data	0x1b000	0x1000	0x200	False	0.02734375	data	0.0	IMAGE_SCN_CNT_INITIALIZED_DATA, IMAGE_SCN_MEM_WRITE, IMAGE_SCN_MEM_READ
.rdata	0x1c000	0x20b3	0x2200	False	0.359834558824	data	2.96025706595	IMAGE_SCN_MEM_WRITE, IMAGE_SCN_MEM_READ

Name	Virtual Address	Virtual Size	Raw Size	Xored PE	ZLIB Complexity	File Type	Entropy	Characteristics
.data	0x1f000	0x7b2	0x800	False	0.45703125	data	4.70767794561	IMAGE_SCN_CNT_INITIALIZED_DATA, IMAGE_SCN_MEM_WRITE, IMAGE_SCN_MEM_READ

Imports

DLL	Import
user32.dll	GetActiveWindow, SetWindowsHookExA, GetLayeredWindowAttributes
kernel32.dll	GetProcAddress, LoadLibraryA, VirtualProtect, VirtualAlloc, IstrlenA, IstrcatA, IstrcmpA, GetEnvironmentVariableW
ole32.dll	OleInitialize, OleQueryCreateFromData, IIDFromString, CLIPFORMAT_UserUnmarshal, OleCreateEmbeddingHelper, HDC_UserSize
msimg32.dll	AlphaBlend, TransparentBlt
comdlg32.dll	PageSetupDlgA, PrintDlgA
oledlg.dll	OleUICanConvertOrActivateAs, OleUIChangeSourceW, OleUIConvertA
comctl32.dll	CreateStatusWindow, LBIItemFromPt, DPA_Create, FlatSB_ShowScrollBar, ImageList_GetFlags
oleacc.dll	IID_IAccessible, LresultFromObject
version.dll	VerFindFileW, VerInstallFileA, VerQueryValueA, VerQueryValueW
gdiplus.dll	GdipEnumerateMetafileDestPointI, GdipCreateBitmapFromHBITMAP, GdipSetPenUnit, GdipGetImageEncoders, GdipGetPathPointsI
winspool.drv	FindNextPrinterChangeNotification, ConnectToPrinterDlg, SetPrinterDataW, GetPrinterW, DeletePrinterDataExW
shell32.dll	SHGetSpecialFolderPathA
advapi32.dll	GetKernelObjectSecurity, CryptEnumProviderTypesA, RegQueryValueExW, RegisterIdleTask

Exports

Name	Ordinal	Address
DllServer	1	0x1000447b

Network Behavior

No network behavior found

Code Manipulations

Statistics

Behavior

- loaddll32.exe
- cmd.exe
- rundll32.exe
- rundll32.exe

 Click to jump to process

System Behavior

Analysis Process: loaddll32.exe PID: 6836 Parent PID: 2916**General**

Start time:	10:06:16
Start date:	06/04/2021
Path:	C:\Windows\System32\loaddll32.exe
Wow64 process (32bit):	true
Commandline:	loaddll32.exe 'C:\Users\user\Desktop\gg_1.gif.dll'
Imagebase:	0xef0000
File size:	116736 bytes
MD5 hash:	542795ADF7CC08EFCF675D65310596E8
Has elevated privileges:	true
Has administrator privileges:	true
Programmed in:	C, C++ or other language
Yara matches:	<ul style="list-style-type: none"> Rule: JoeSecurity_Ursnif_1, Description: Yara detected Ursnif, Source: 00000001.00000002.699200830.0000000000EC0000.00000004.00000001.sdmp, Author: Joe Security
Reputation:	moderate

File Activities

File Path	Access	Attributes	Options	Completion	Count	Source Address	Symbol
-----------	--------	------------	---------	------------	-------	----------------	--------

Analysis Process: cmd.exe PID: 6864 Parent PID: 6836**General**

Start time:	10:06:17
Start date:	06/04/2021
Path:	C:\Windows\SysWOW64\cmd.exe
Wow64 process (32bit):	true
Commandline:	cmd.exe /C rundll32.exe 'C:\Users\user\Desktop\gg_1.gif.dll',#1
Imagebase:	0x2a0000
File size:	232960 bytes
MD5 hash:	F3BDBE3BB6F734E357235F4D5898582D
Has elevated privileges:	true
Has administrator privileges:	true
Programmed in:	C, C++ or other language
Reputation:	high

File Activities

File Path	Access	Attributes	Options	Completion	Count	Source Address	Symbol
-----------	--------	------------	---------	------------	-------	----------------	--------

Analysis Process: rundll32.exe PID: 6908 Parent PID: 6836**General**

Start time:	10:06:17
Start date:	06/04/2021
Path:	C:\Windows\SysWOW64\rundll32.exe
Wow64 process (32bit):	true
Commandline:	rundll32.exe C:\Users\user\Desktop\gg_1.gif.dll,DllServer
Imagebase:	0x1050000
File size:	61952 bytes
MD5 hash:	D7CA562B0DB4F4DD0F03A89A1FDAD63D

Has elevated privileges:	true
Has administrator privileges:	true
Programmed in:	C, C++ or other language
Yara matches:	<ul style="list-style-type: none"> Rule: JoeSecurity_Ursnif_1, Description: Yara detected Ursnif, Source: 00000004.00000002.387313333.0000000004BA0000.00000004.00000001.sdmp, Author: Joe Security
Reputation:	high

File Activities

File Path	Offset	Length	Completion	Count	Source Address	Symbol
-----------	--------	--------	------------	-------	----------------	--------

Analysis Process: rundll32.exe PID: 6920 Parent PID: 6864

General

Start time:	10:06:17
Start date:	06/04/2021
Path:	C:\Windows\SysWOW64\rundll32.exe
Wow64 process (32bit):	true
Commandline:	rundll32.exe 'C:\Users\user\Desktop\gg_1.gif.dll',#1
Imagebase:	0x1050000
File size:	61952 bytes
MD5 hash:	D7CA562B0DB4F4DD0F03A89A1FDAD63D
Has elevated privileges:	true
Has administrator privileges:	true
Programmed in:	C, C++ or other language
Yara matches:	<ul style="list-style-type: none"> Rule: JoeSecurity_Ursnif_1, Description: Yara detected Ursnif, Source: 00000005.00000002.389073217.0000000004B40000.00000004.00000001.sdmp, Author: Joe Security
Reputation:	high

Disassembly

Code Analysis